



# HiTemp

## Wi-Fi App Setup

---



## User Privacy

We take your privacy very seriously, user's private data, such as contact details, addresses and other private information will require your permission before being uploaded to the cloud; we work hard to protect your data security.

## Description

- Receive data signal from cloud server and transmit to the main device;
- Receive data signal from main device and transmit to cloud server;
- To achieve remote upgrade the WIFI module baseplate MCU by cloud server;
- To achieve the remote upgrade of the main device by WIFI module baseplate MCU.

## Technical Parameters

**OPERATING VOLTAGE:** DC8V~12V (Recommended value 12V)

**OPERATING CURRENT:** Max. recurrent peak 1A, average standby current 50mA

**TEMP. RANGE:** Operating Temp.: -30°C~+70°C; Storage Temp.: -40°C~+85°C

**LED INDICATOR LIGHT:**

4 lights, Network configuration indicator, router connection indicator, cloud server connection indicator, 485 communication indicator;

**DIMENSION(L×W×H):** 78mm×63mm×24mm

## Installation

There is a magnet on the back of the WIFI module. It can be installed indoors or outdoors but should avoid direct sunlight.

Scan one of the following QR codes according to your phone's operating system to download the App (Or search 'HiTemp' on your phone's application store):

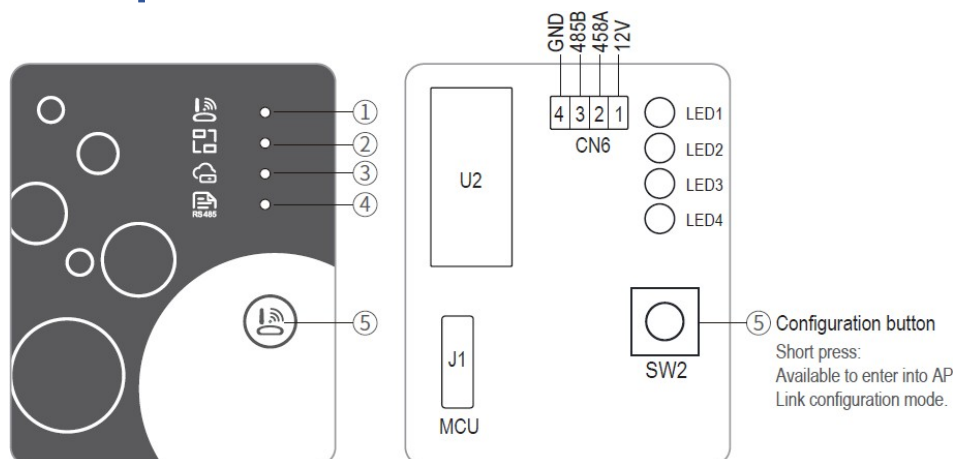


Google Play Store



Apple Store

## Functional Description



ITEM	NAME	LONG LIGHT	SLOW FLASH	EXTINGUISH
1	Network configuration indicator	Configuring Network	SmartLink configuring	Done
2	Router connection indicator	Normal	Abnormal	-
3	Cloud server connection indicator	Normal	Abnormal	-
4	485 communication indicator	Normal	Abnormal	-

## Account Login

Use an email address and password to register, login to the app or reset the password.

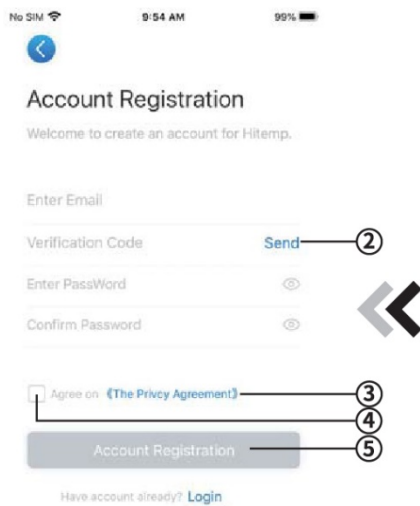


Fig 2. Account Registration Interface

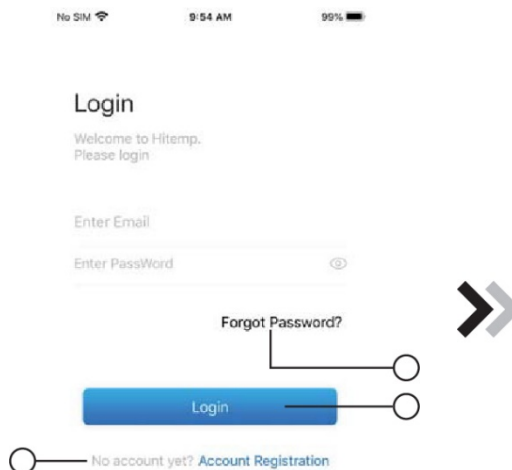


Fig 1. Login Interface

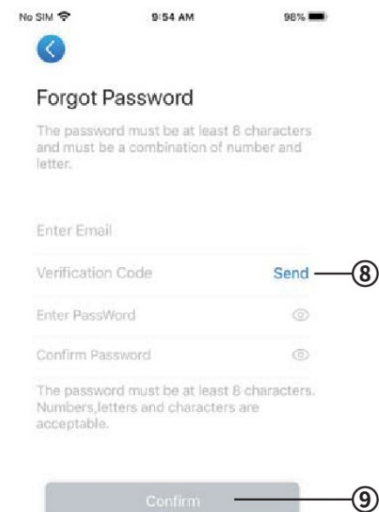


Fig 3. Forgot Password Interface

1. **Account Registration:** To register an account, click ① to jump to the Account Registration interface, fill in the relevant information and click ② to receive verification code. While completing the application information, click ③ to read the details of the Privacy Policy, click ④ to agree, and click ⑤ to complete registration. Please note, the verification code is only valid for 15min, if you surpass this you will need to request another.
2. **Log in:** Follow the instructions on the login page and enter your registered email address and password, click ⑥ and jump to device list;
3. **Forgot Password:** If you forget your password, click ⑦, jump to the Forgot Password interface (Fig.3 ). Follow the instructions on the page, fill in the relevant information, then click ⑧ to receive a verification code to your mailbox, click ⑨ to confirm and password reset is done.

## Add Device

After login, the app will take you to the 'My Device' interface. Follow the instructions to add Wi-Fi or DTU:

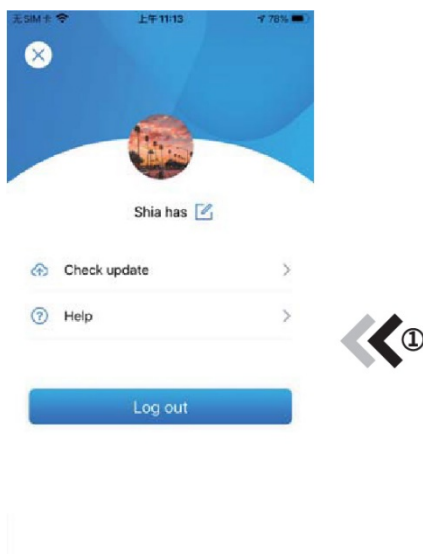


Fig. 5 The left-hand menu

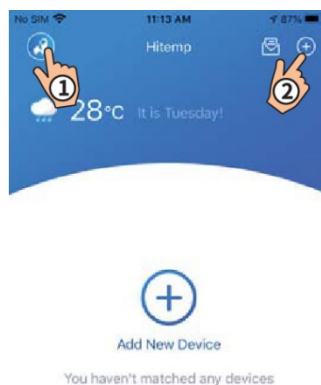


Fig. 4 My Device Interface

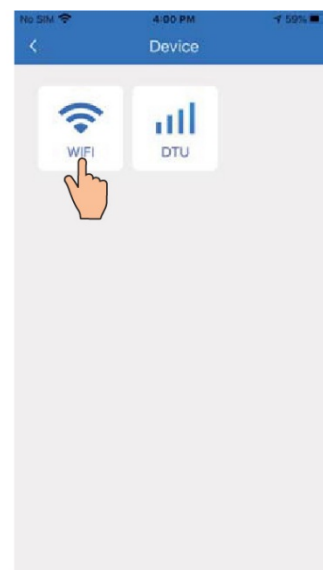


Fig. 6 Add Device Interface

# Wi-Fi Configure Network

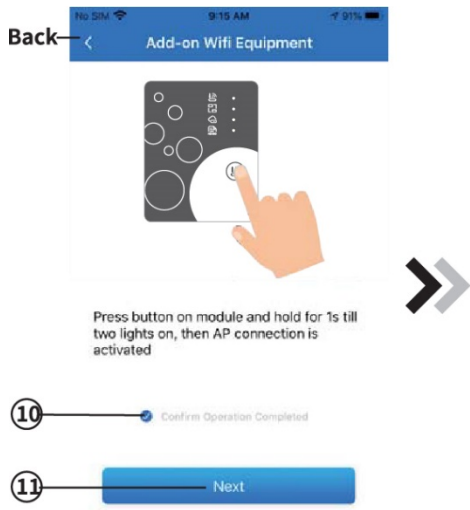


Fig. 7 WiFi Module On Interface



Fig. 8 Enter Password Interface

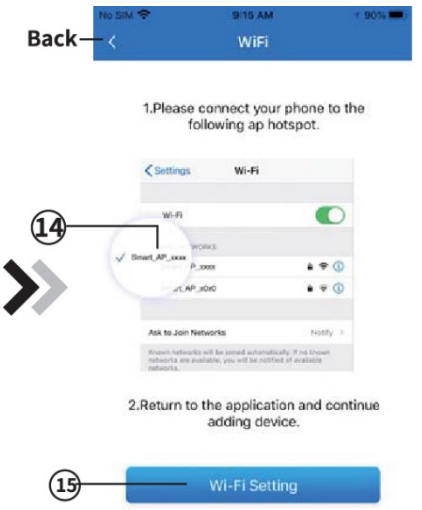


Fig. 9 Connect Specified WiFi

1. Follow the instructions on the page (Fig.7), press and hold the button on the module for 1 second until two lights are on (meaning the AP connection is activated), click ⑩ to confirm, click ⑪ to turn the page;
2. Click ⑫ to enter the WIFI password for the current connection, click ⑬ to confirm;
3. Jump to system settings and connect specified WIFI, click ⑭ to select the “Smart\_AP\_xxx”, click ⑮ to popup window(Fig.10), follow the instructions and then jump to WIFI setting interface(Fig.11);
4. Slide the page back to configure network interface (Fig. 12), click ⑯ to enter the next stage.

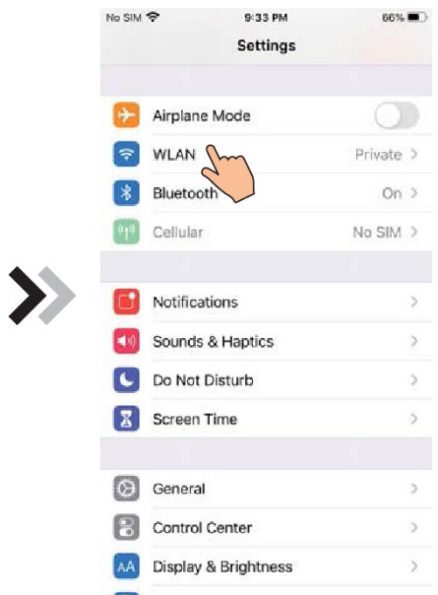


Fig. 10 Setting Interface

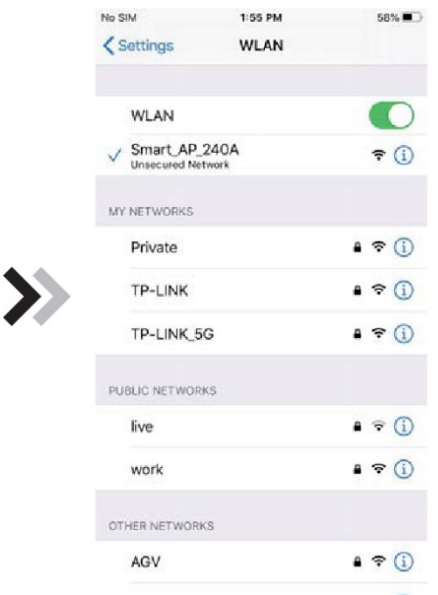


Fig. 11 WiFi Setting Interface

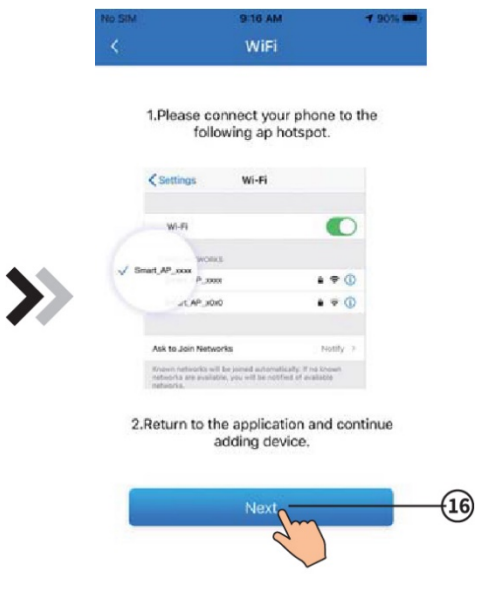


Fig.12 Connect Specified WiFi

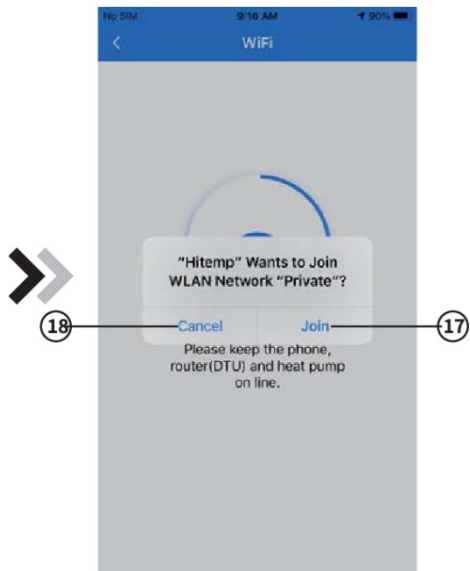


Fig. 13 Configure Network Interface

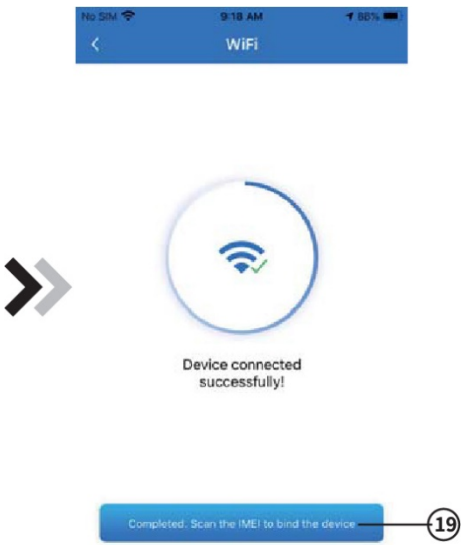


Fig. 14 Bond Device Interface

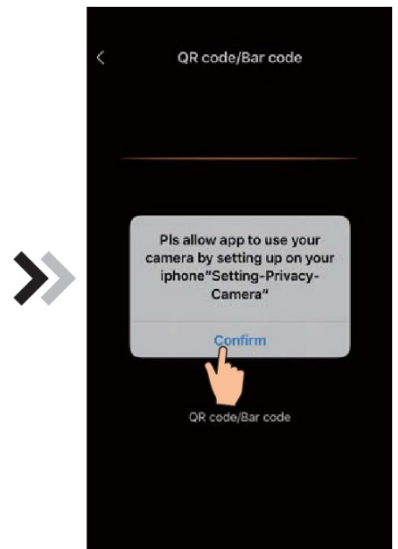


Fig.15 Scanning Interface

5. To join the WLAN Network, click ⑰ (Fig. 13); click ⑲ to bond device (Fig. 14);
6. Press 'Confirm' to allow the app to use the camera for scanning the Barcode on your unit. Then, scan the unit's barcode.
7. Press 'Confirm' again to complete device bonding. Head back to the main interface (Fig. 18).



Fig 16. Barcode

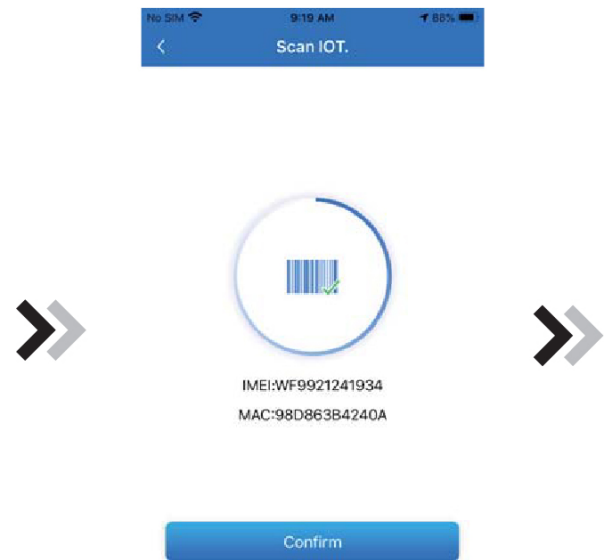
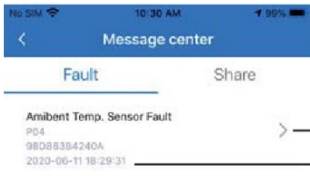
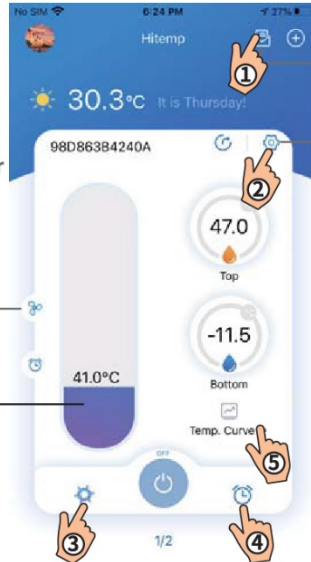


Fig 17. Bond Device Complete Interface

# Device Management



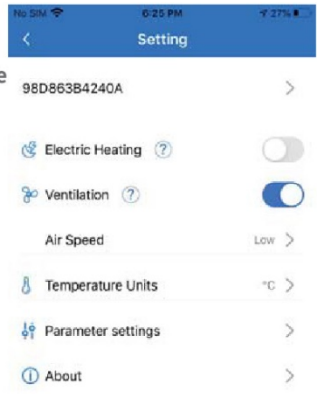
Click to read the solution  
Display the error



Functions status of the unit  
Click or slide to change the target temperature

Share/  
Faulty message

Functions setting



Delete Device Unbound

Fig 19. Troubleshooting Interface

Fig 18. Device Main Interface

Fig 20. Setting Interface

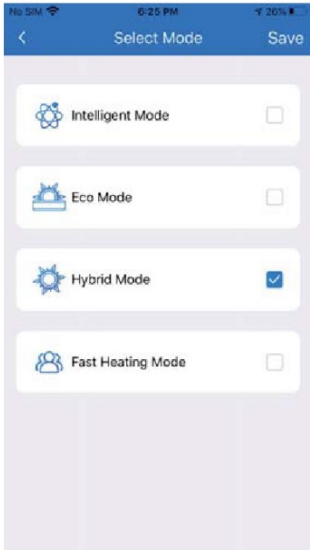


Fig 21. Mode Switching Interface

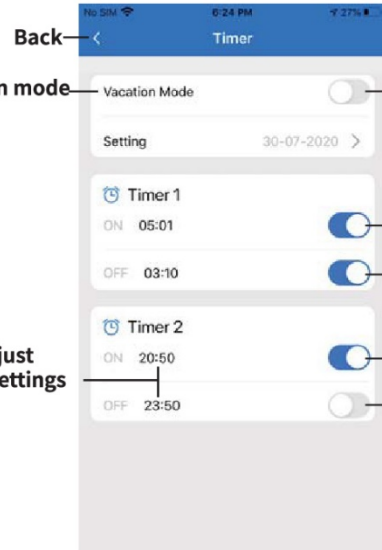


Fig 22. Timers Setting Interface

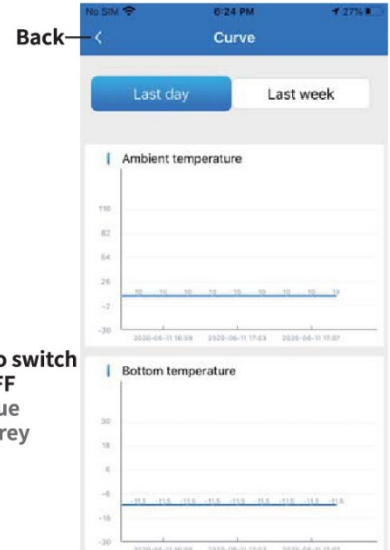


Fig 23. Temperature Curve

	<b>ON/OFF</b>	Click to turn the unit on/off		<b>Intelligent</b>	Select save to change the working mode
	<b>Timer Settings</b>	Click to enter timer on/off & vacation mode		<b>Eco</b>	Select save to change the working mode
	<b>Message</b>	View fault messages		<b>Hybrid</b>	Select save to change the working mode
③ Fig 18.	<b>Mode</b>	Mode Changing: Intelligent, Eco, Hybrid & Fast Heating		<b>Fast Heating</b>	Select save to change the working mode
	<b>Settings</b>	Change function settings of the unit		<b>Temperature Curve</b>	Display the corresponding temperature graph